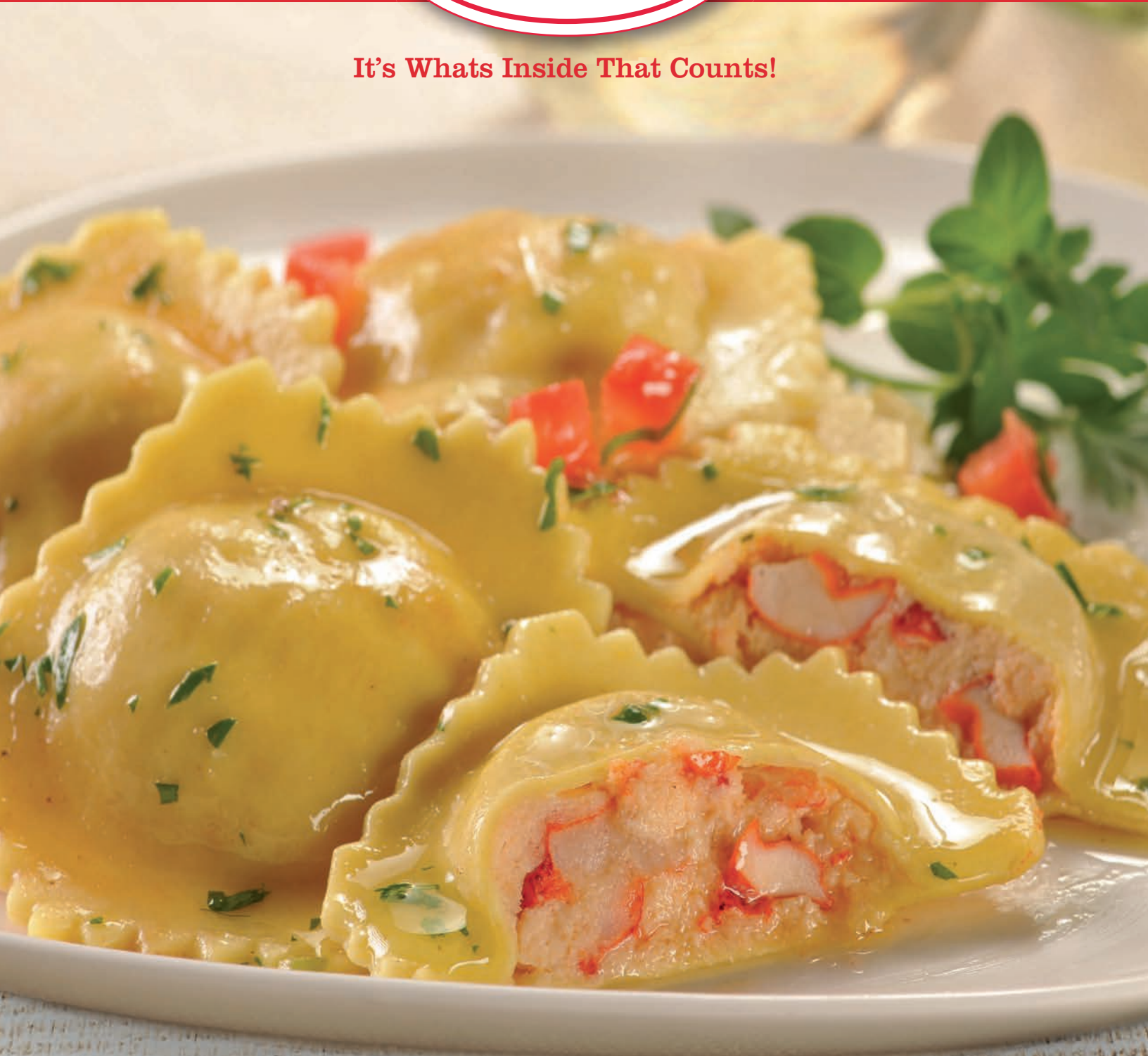




It's Whats Inside That Counts!



Code # 35588

Product Guide



Artisan Crafted

Joseph's leadership in gourmet pasta and sauces results from an artisan inspired process. From bench top to scale up, Joseph's utilizes time-honored recipes and methodologies to make a wide range of superior pasta and sauce products that inspire innovation and customer loyalty.

The commitment and passion remain at the heart of Joseph's Gourmet Pasta Company's philosophy of offering exceptional, authentic products. We use only the freshest ingredients, prepare our own stocks and reductions, and braise, sauté and roast ingredients ourselves to maximize flavor and texture. It is this careful and personal treatment of our ingredients paired with our use of classic recipes and techniques that makes Joseph's pasta and sauce products incomparable.

**Bold Flavors • Fillings made from scratch • Roasting Meats and Vegetables
Large particulate • Thin Dough • Quality Ingredients**

UPC	Product Name	Net Wt.	Pack	Approx. Count
Seafood Filled Ravioli				
34228	Striped Maine Lobster & Cheese Ravioli – Maine Lobster meat blended with ricotta and mozzarella cheeses and leeks; wrapped in par cooked striped black squid ink and egg pasta (Medium Hexagon)	6 lbs	2/3 lb	15-16 per lb
34387	Shrimp & Roasted Garlic Ravioli – Shrimp and roasted garlic blended with ricotta, Pecorino Romano cheeses, leeks and black pepper; wrapped in par cooked lemon rosemary pasta (Medium Hexagon)	6 lbs	2/3 lb	15-16 per lb
35588	Maine Lobster Sherry Cream Ravioli – Maine lobster meat blended with our own lobster sherry cream reduction; wrapped in par cooked egg pasta (Large Hexagon)	6 lbs	2/3 lb	12-13 per lb
43318	Maryland-Style Blue Crab Ravioli – Crab meat and grilled red peppers blended with ricotta cheese, onions, celery and lemon; wrapped in par cooked egg pasta (Large Square)	6 lbs	2/3 lb	11-12 per lb
44228	Maine Lobster & Cheese Ravioli – Maine lobster meat blended with mozzarella and ricotta cheeses and a creamy leek reduction; wrapped in par cooked egg pasta (Small Round)	6 lbs	2/3 lb	24-25 per lb
45437	Maine Lobster Sherry Cream Ravioli with Saffron Dough – Maine Lobster meat blended with a creamy sherry wine reduction; wrapped in par cooked saffron pasta (Large Round)	6 lbs	2/3 lb	11-12 per lb
Meat Filled Ravioli				
34479	Braised Beef Ravioli – Slow braised hanger steak blended with asiago and Parmesan cheeses, grilled onions in a Chianti reduction; wrapped in par cooked egg pasta (Medium Hexagon)	6 lbs	2/3 lb	15-16 per lb
43325	Sausage & Broccolini Ravioli – Roasted Italian sausage blended with roasted garlic, broccolini, red bell peppers, Pecorino Romano and fontina cheeses; wrapped in par cooked egg pasta (Large Square)	6 lbs	2/3 lb	11-12 per lb
43328	Beef Ravioli – Classic slow simmered “Bolognese” meat ragu’ cooked with Chianti wine and blended with Parmesan and mozzarella cheeses; wrapped in par cooked egg pasta (Large Round)	6 lbs	2/3 lb	13-14 per lb
43350	Chicken Florentine Ravioli – Grilled chicken breast and spinach blended with ricotta, mozzarella, fontina and parmesan cheeses and roasted garlic; wrapped in par cooked egg pasta (Large Square)	6 lbs	2/3 lb	11-12 per lb

To make our Grilled Vegetable Ravioli, we grill fresh red and yellow bell peppers, asparagus, portabellas and onions to bring out their full flavors. Rough-chopped and blended with Ricotta, Mozzarella and an Italian blend of Cheeses, it is then wrapped in this basil pasta.



UPC	Product Name	Net Wt.	Pack	Approx. Count
Cheese Filled Ravioli				
35965	Quattro Formaggi Ravioli – Ricotta, fontina, Parmesan, Pecorino Romano cheeses blended with black pepper and nutmeg; wrapped in par cooked egg pasta (Medium Hexagon)	6 lbs	2/3 lb	15-16 per lb
41321	Three Cheese Ravioli – Ricotta, Parmesan and fontina cheeses blended with black pepper; wrapped in par cooked egg pasta (Small Square)	12 lbs	4/3 lb	27-28 per lb
43321	Large Square Three Cheese Ravioli – Ricotta, Parmesan, fontina cheeses blended with black pepper; wrapped in par cooked egg pasta (Large Square)	12 lbs	4/3 lb	11-12 per lb
45432	New York Style Cheese Ravioli – Ricotta and Pecorino Romano cheeses blended with a garlic cream reduction; wrapped in par cooked egg pasta (Large Round)	12 lbs	4/3 lb	11-12 per lb
47015	Gigantic Three Cheese Ravioli – Ricotta, parmesan and fontina cheeses; wrapped in par cooked egg pasta (JUMBO Round)	12 lbs	4/3 lb	4-5 per lb
Vegetable Filled Ravioli				
34351	Grilled Vegetable Ravioli – Grilled portabella, onions, asparagus, red and yellow bell peppers, roasted garlic blended with Ricotta, Mozzarella and a blend of Italian cheeses; wrapped in par cooked basil pasta (Medium Hexagon)	6 lbs	2/3 lb	15-16 per lb
35776	Pumpkin & Mascarpone Ravioli – Pumpkin and butternut squash puree blended with Parmesan, mascarpone cheeses and brown sugar; wrapped in par cooked egg pasta (Small Round)	6 lbs	2/3 lb	24-25 per lb
41336	Roasted Butternut Squash Ravioli – Roasted butternut squash blended with Parmesan, amaretti flavor and brown sugar; wrapped in par cooked sage pasta (Small Square)	6 lbs	2/3 lb	27-28 per lb
44230	Roasted Wild Mushroom Ravioli – Roasted portabella and cremini mushrooms blended with mozzarella, Parmesan cheeses and roasted garlic; wrapped in par cooked egg pasta (Small Round)	6 lbs	2/3 lb	24-25 per lb
44245	Spinach & Roasted Garlic Ravioli – Roasted garlic and spinach blended with mozzarella and Pecorino Romano cheeses; wrapped in par cooked egg pasta (Small Round)	6 lbs	2/3 lb	24-25 per lb
45430	Large Round Roasted Mushroom Ravioli – Roasted cremini and portabella mushrooms blended with garlic, mozzarella and Parmesan cheeses; wrapped in par cooked egg pasta (Large Round)	6 lbs	2/3 lb	11-12 per lb
45438	Spinach & Roasted Portabella Ravioli – Spinach and roasted portabella mushrooms blended with mozzarella, provolone, Parmesan, Pecorino Romano cheeses and garlic cream; wrapped in par cooked egg pasta (Large Round)	6 lbs	2/3 lb	11-12 per lb
Breaded Ravioli				
27312	Breaded Jalapeno Pepper Ravioli – Ricotta and mozzarella cheeses blended with spicy jalapeno peppers; wrapped in wonton dough and coated with rustic bread crumbs (Square)	6 lbs	2/3 lb	20-21 per lb
27316	Breaded Mozzarella Ravioli – Mozzarella, Parmesan and ricotta cheeses blended with roasted garlic and parsley; wrapped in wonton dough and coated with ground herb spiced bread crumbs (Half Moon)	6 lbs	2/3 lb	20-21 per lb



Breaded



Cannelloni



Gnocchi



Nests



Ravioli



Sacchetti




Tortellini



Tortelloni



Pasta Sheet

UPC	Product Name	Net Wt.	Pack	Approx. Count
	Gluten Free Certified 			
01306	Fettuccine – White rice flour blended with fresh whole eggs (par cooked)	15 lbs	6/2.5 lb	22 nests / bag
44302	Four Cheese Ravioli – Ricotta, fontina, Parmesan and Pecorino Romano cheeses blended with black pepper and nutmeg; wrapped in par cooked gluten free pasta (Small Round)	6 lbs	2/3 lb	25-26 per lb
	Cannelloni/Manicotti – 4.25 inches and 2.5 oz.			
12003	Three Cheese Manicotti – Ricotta cheese blended with mozzarella, Parmesan cheeses and light cream; wrapped in egg pasta	6.25 lbs	2/3.125 lb	39-41 per case
	Tortellini			
21735	Meat Tortellini – Fresh ground beef blended with Parmesan and mozzarella cheeses, onion, basil and black pepper; wrapped in par cooked egg pasta	12 lbs	3/4 lb	96-97 per lb
81701	Five Cheese Tortellini – Ricotta, Parmesan, provolone, fontina, and Pecorino Romano cheeses blended with black pepper and nutmeg; wrapped in par cooked egg pasta	12 lbs	3/4 lb	96-97 per lb
81704	Five Cheese Tri-Color Tortellini – Ricotta, Parmesan, provolone, fontina, and Pecorino Romano cheeses blended with black pepper and nutmeg; wrapped in par cooked egg , tomato and spinach pasta (Mixed)	12 lbs	3/4 lb	96-97 per lb
	Tortelloni			
22221	Five Cheese Tortelloni – Ricotta, Parmesan, fontina, mozzarella, Pecorino Romano and cheeses blended with black pepper and nutmeg; wrapped in par cooked egg pasta (Jumbo Tortellini)	6 lbs	2/3 lb	32-33 per lb
22240	Spinach & Roasted Garlic Tortelloni – Spinach and roasted garlic blended with ricotta, mozzarella, Parmesan, fontina, and Pecorino Romano cheeses; wrapped in par cooked egg pasta (Jumbo Tortellini)	6 lbs	2/3 lb	32-33 per lb
22445	Braised Veal & Beef Tortelloni – Fresh ground veal, beef and pancetta blended with Parmesan cheese, garlic, parsley and chives; wrapped in par cooked egg pasta (Jumbo Tortellini)	6 lbs	2/3 lb	32-33 per lb
	Sacchetti			
25007	Four Cheese Sacchetti – Ricotta, mozzarella, Parmesan and Pecorino Romano cheeses; wrapped in par cooked mini egg “beggars purses”	6 lbs	2/3 lb	31-32 per lb
25009	Truffle & Four Cheese Sacchetti – Ricotta, mozzarella, Parmesan and Pecorino Romano cheeses blended with black truffle peelings and truffle oil; wrapped in par cooked mini egg “beggars purses”	6 lbs	2/3 lb	31-32 per lb
25011	Porcini & Four Cheese Sacchetti – Porcini mushroom flavor blended with ricotta, mozzarella, Parmesan and fontina cheeses and garlic; wrapped in par cooked mini egg “beggars purses”	6 lbs	2/3 lb	31-32 per lb

Our Spinach and Garlic Tortelloni is made from sautéed spinach, roasted garlic blended with Ricotta, Grana Padano, Pecorino Romano, Fontina, Parmesan and Mozzarella cheeses. We then wrap it in our thinly rolled pasta made from custom milled 100% stone ground semolina flour and Grade A whole eggs.



UPC	Product Name	Net Wt.	Pack	Approx. Count
Nests: Fettuccine (Wide Noodle)				
01106	Egg Fettuccine Nest – Semolina flour blended with fresh whole eggs (par cooked)	15 lbs	6/2.5 lb	22 nests/bag
01116	Squid Ink Fettuccine Nest – Semolina flour blended with fresh whole eggs and black squid ink (par cooked)	15 lbs	6/2.5 lb	22 nests/bag
Nests: Linguine (Thin Noodle)				
02108	Egg Linguine Nest – Semolina flour blended with fresh whole eggs (par cooked)	15 lbs	6/2.5 lb	22 nests/bag
Nests: Spaghetti / Tagliarini				
16108	Spaghetti alla Chitarra Pasta – Semolina flour blended with fresh whole eggs (par cooked)	15 lbs	6/2.5 lb	22 nests/bag
Nests: Angel Hair				
04108	Egg Angel Hair Nest – Semolina flour blended with fresh whole eggs (par cooked)	15 lbs	6/2.5 lb	22 nests/bag
Nests: Pappardelle (Very Wide Noodle)				
15106	Egg Pappardelle Nest – Semolina flour blended with fresh whole eggs (par cooked)	15 lbs	6/2.5 lb	22 nests/bag
Sheets				
09201	Raw Egg Pasta Sheets – Durum Flour blended with fresh whole eggs (Raw)	10 lbs	2/5 lb	40 sheets
09205	PC Egg Pasta Sheets – Durum Flour blended with fresh whole eggs (Par Cooked)	10 lbs	2/5 lb	40 sheets
Sauces				
51492	Alfredo Sauce – Thick Cream Based sauce blended with Pecorino Romano cheese and garlic	15 lbs	3/5 lb	3/5 lb
55000	Alfredo Sauce – Cream sauce blended with Romano cheese, butter, garlic and nutmeg	16 lbs	4/4 lb	4/4 lb
55005	Bolognese Sauce – Classic meat sauce from Emilia-Romagna. Ground beef and pork is slowly simmered with mirepoix, chianti wine and tomatoes	16 lbs	4/4 lb	4/4 lb
55010	Demi-Glace Sauce – Rich, umami beef sauce with shallots with a hint of rosemary and porcini mushrooms	16 lbs	4/4 lb	4/4 lb
55015	Hollandaise Sauce – Made with real butter, a touch of lemon juice and egg yolks	16 lbs	4/4 lb	4/4 lb
55020	Marinara Sauce – Tomatoes blended with basil, extra virgin olive oil and garlic	16 lbs	4/4 lb	4/4 lb
Pesto				
55025	Basil Pesto – Basil blended with extra virgin olive oil, parmesan cheese and garlic (nut free)	8 lbs	8/1 lb	8/1 lb
55030	Sundried Tomato Pesto – Sun-dried tomatoes with fresh garlic, extra virgin olive oil, Parmesan and Mediterranean herbs of Basil and Oregano (nut free)	8 lbs	8/1 lb	8/1 lb
Gnocchi				
24327	Potato Gnocchi – Durum flour and potato flour blended with whole eggs and milk	12 lb	3 lb	80-81 per lb

Our Potato Gnocchi is made with Durum and potato flour blended with Grade A whole eggs and milk. MENU IDEA: Gnocchi mac & cheese with roasted artichokes, fontina cheese, preserved lemon and parsley with roasted garlic brioche crumbs.





ARTISAN QUALITY
Joseph's
GOURMET PASTA®



**Call 1-800-863-8998
for samples, ordering or
to schedule a tasting.**

We provide solutions for:

- *Foodservice*
- *Retail*
- *Industrial*



Josephs Gourmet Pasta

262 Primrose Street
Haverhill, MA 01830

1-800-863-8998

© 1-978-521-1718

Fax 978-374-7917

www.josephsgourmetpasta.com

Follow us on:

